

WWW.PCOREELECTRIC.COM

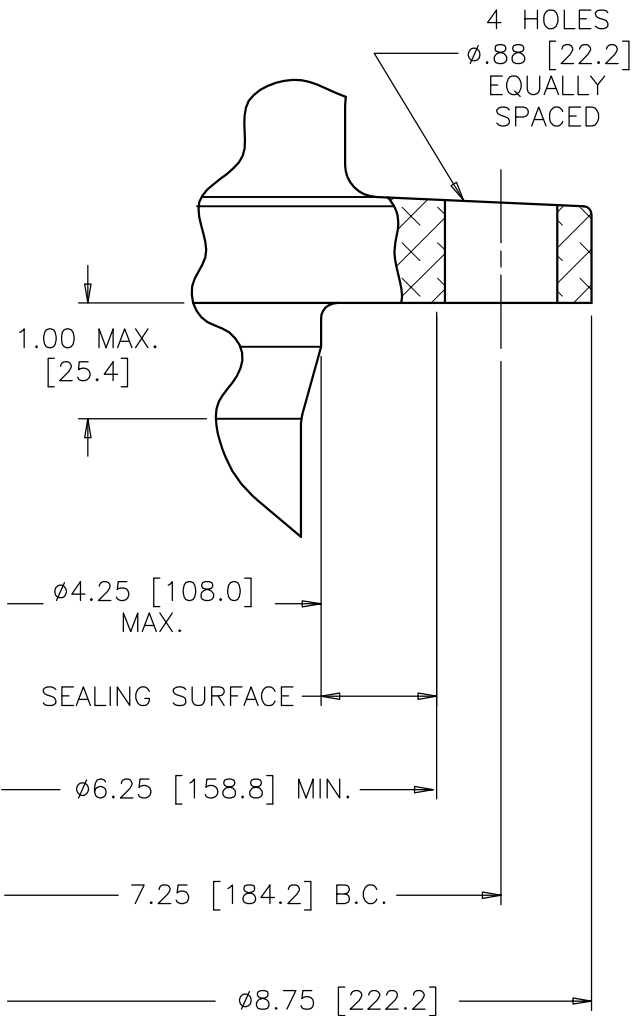
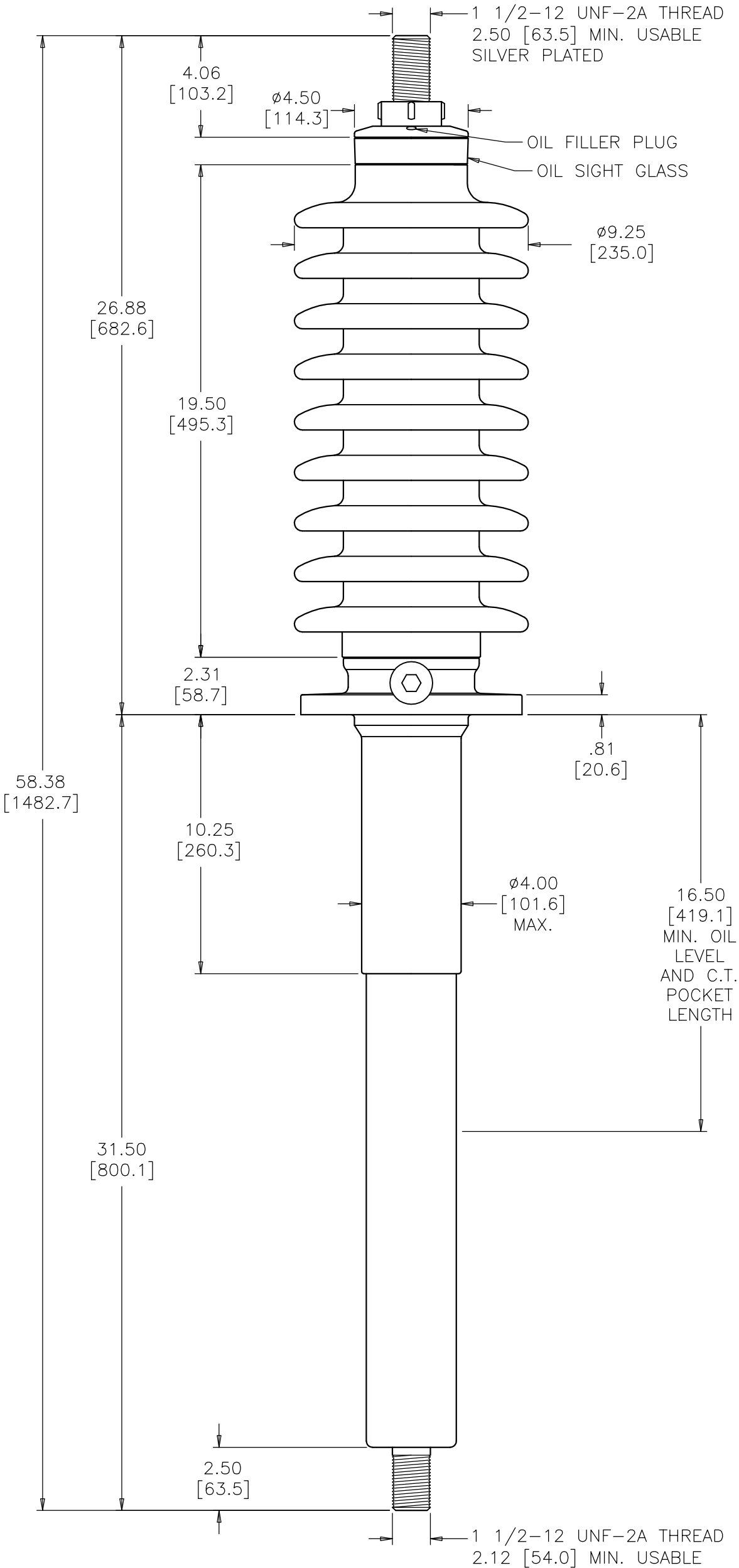
PCORE

ELECTRIC

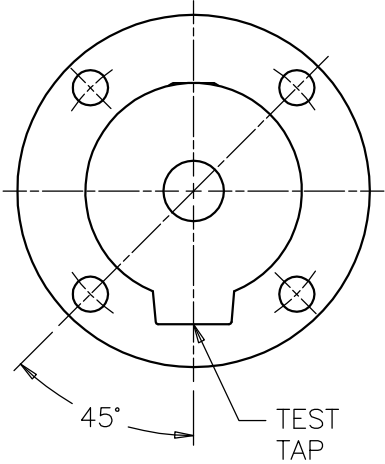
DATE	02/11/02	REV. DATE	12/12/05
MAXIMUM ALTITUDE		10000 ft [3000 m]	
NET WEIGHT		106 lb [48 kg]	
ANGLE OF INCLINATION FROM THE VERTICAL		0° TO 70°	

kV CLASS	46 kV	BIL	250 kV	Uy	29 kV
CURRENT RATING					
1200A BOTTOM CONNECTION IN 55°C RISE OIL					
MIN. CREEP		49.00 [1244.6]	MIN. STRIKE		21.00 [533.4]
CREEP/Uy		1.69 [42.9]	STD.		IEEE C57.19.00
PCB CONTENT OF OIL IS LESS THAN 1 ppm					

DWG.	CATALOG NUMBER	GLAZE COLOR
SD	B-89411-188	BROWN
SD	B-89411-188-70	LT. GRAY
TITLE		
IEEE STANDARD BUSHING		
PRC BUSHING		
7.25 [184.2] B.C.		
ø8.75 [222.2] FLANGE O.D.		
ø4.25 [108.0] MAX. "P" DIM.		



MOUNTING FLANGE DETAIL



FLANGE ALIGNMENT DIAGRAM
TOP VIEW

DIMENSIONS IN INCHES [MILLIMETERS]

REVISION REDRAWN TO SCALE, CREEP WAS 48.00, STRIKE WAS 21.50, WEIGHT WAS 115 lb, 4.06 WAS 4.03, 2.31 WAS 2.27, .81 WAS .75, ø6.25 WAS ø6.38, PCORE WAS LAPP

SCALE 1/5

NOTE TO PURCHASER:
ALL SALES OF PCORE PRODUCTS ARE SUBJECT
TO OUR STANDARD TERMS AND CONDITIONS
AND THE LIMITED WARRANTIES THEREUNDER